

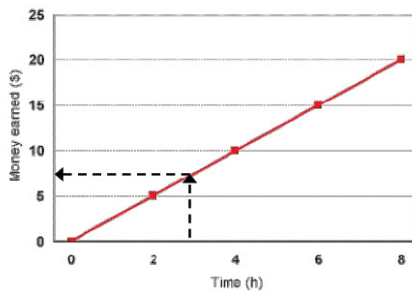
Interpolation and Extrapolation

Interpolation and Extrapolation

- Interpolate
 - make an estimate between two known points in a pattern of data.
- Extrapolate
 - make an estimate by following the pattern of the data outside of known values.
 - Extend the line from the original data.

An example of interpolating:

Student Earnings



An example of extrapolating:

Heated Water Temperature Change

