

Appendix A: Desmids

Figure 1; Suture Line down center.
Figure 2: Lines of symmetry.

Figure 1

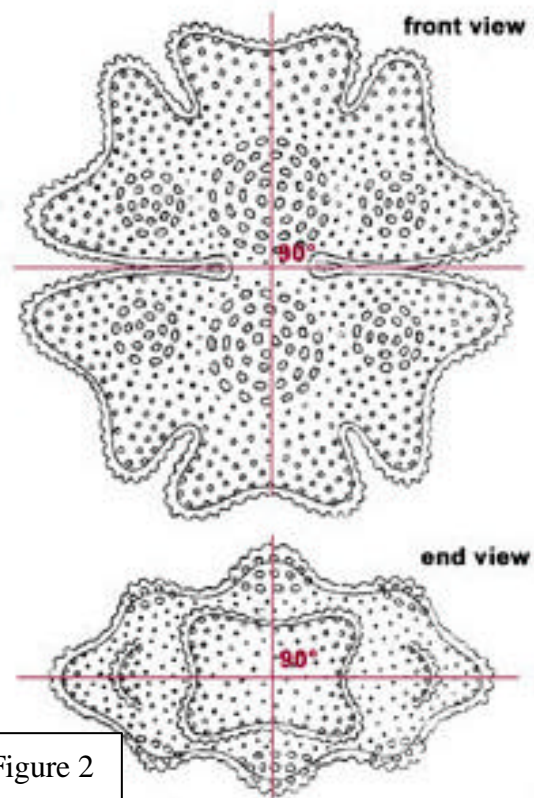
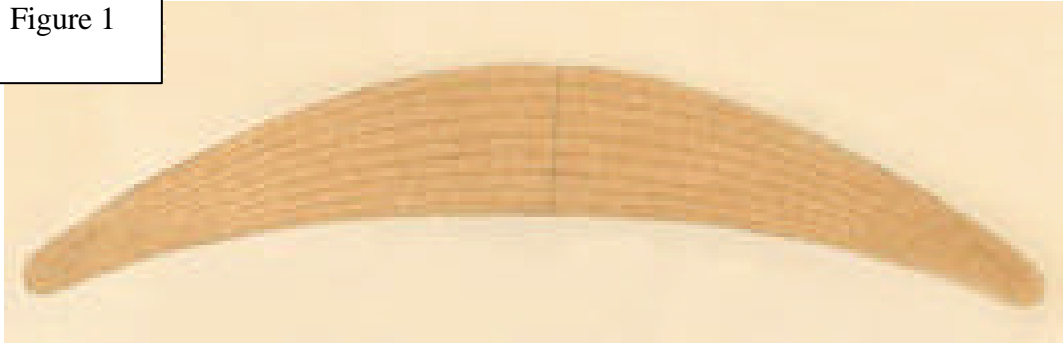


Figure 2

Appendix B:

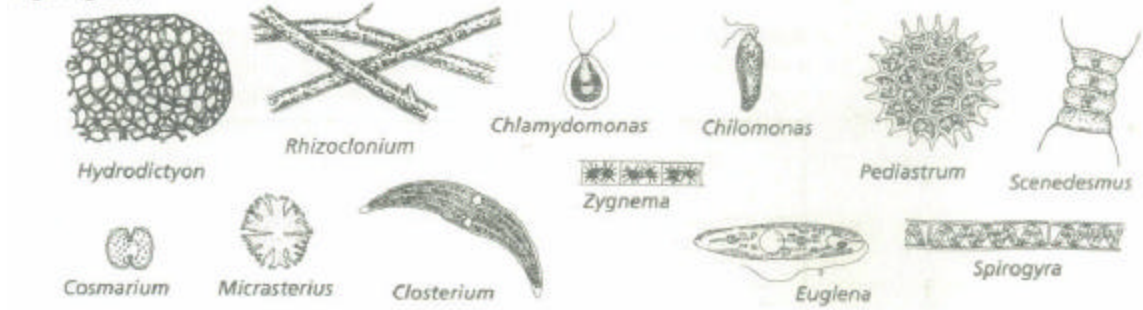
What am I looking at?

FIGURE 1 Organisms in Pond Water

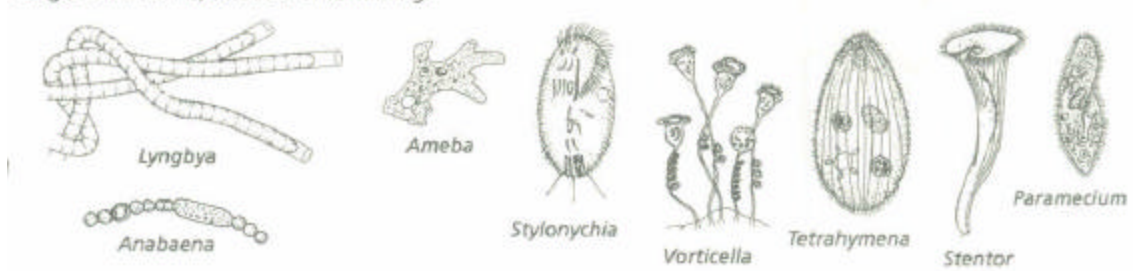
Diatoms: (golden-brown)



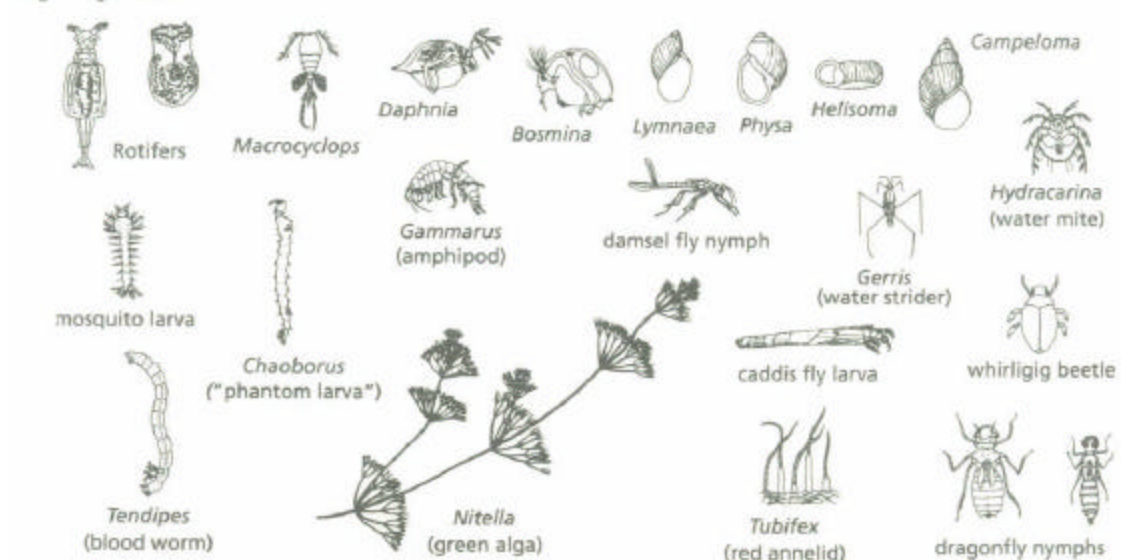
Algae: (green)



Single-celled forms, attached or swimming:



Larger organisms:



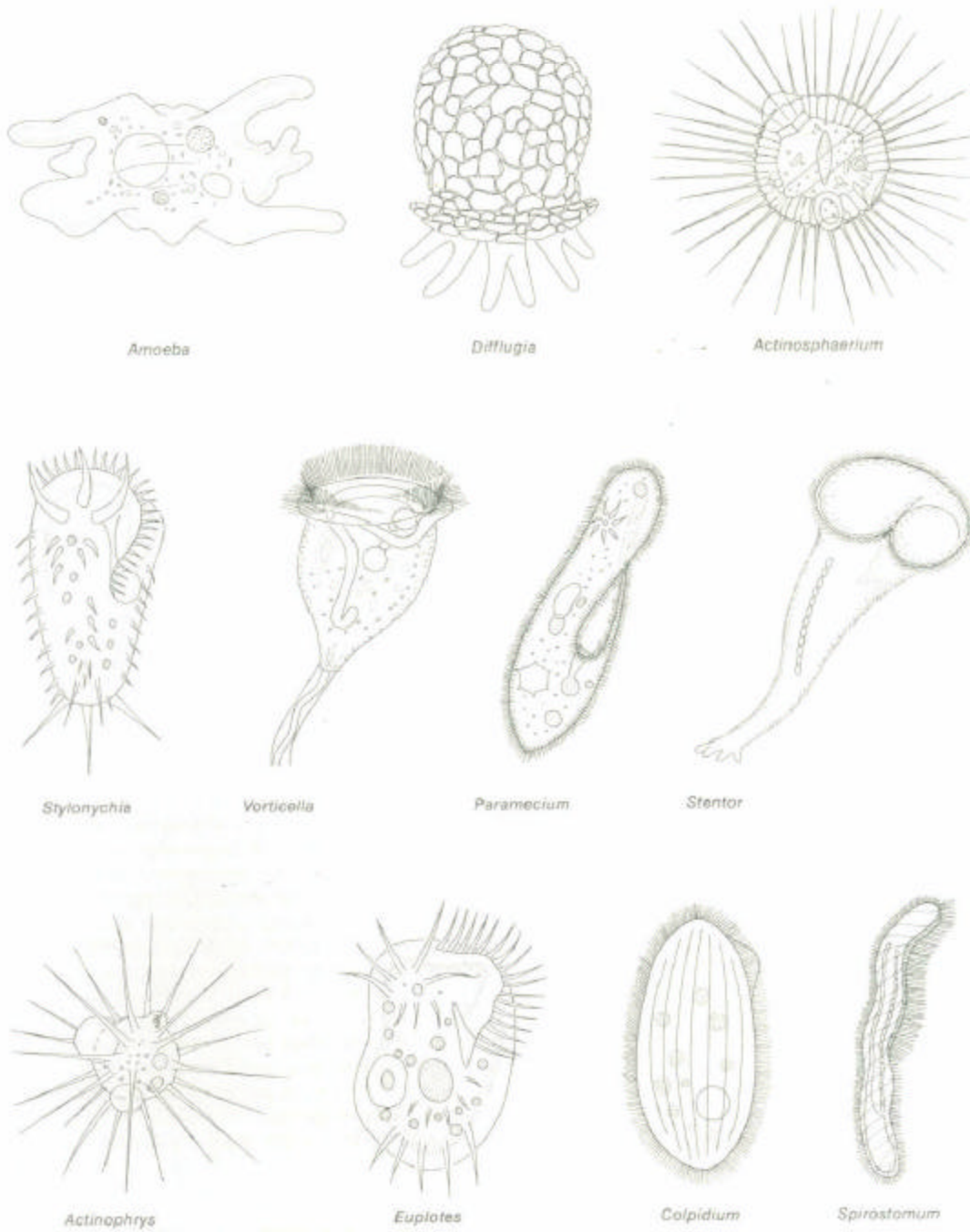


FIGURE 1-7
Protozoans commonly found in pond water.

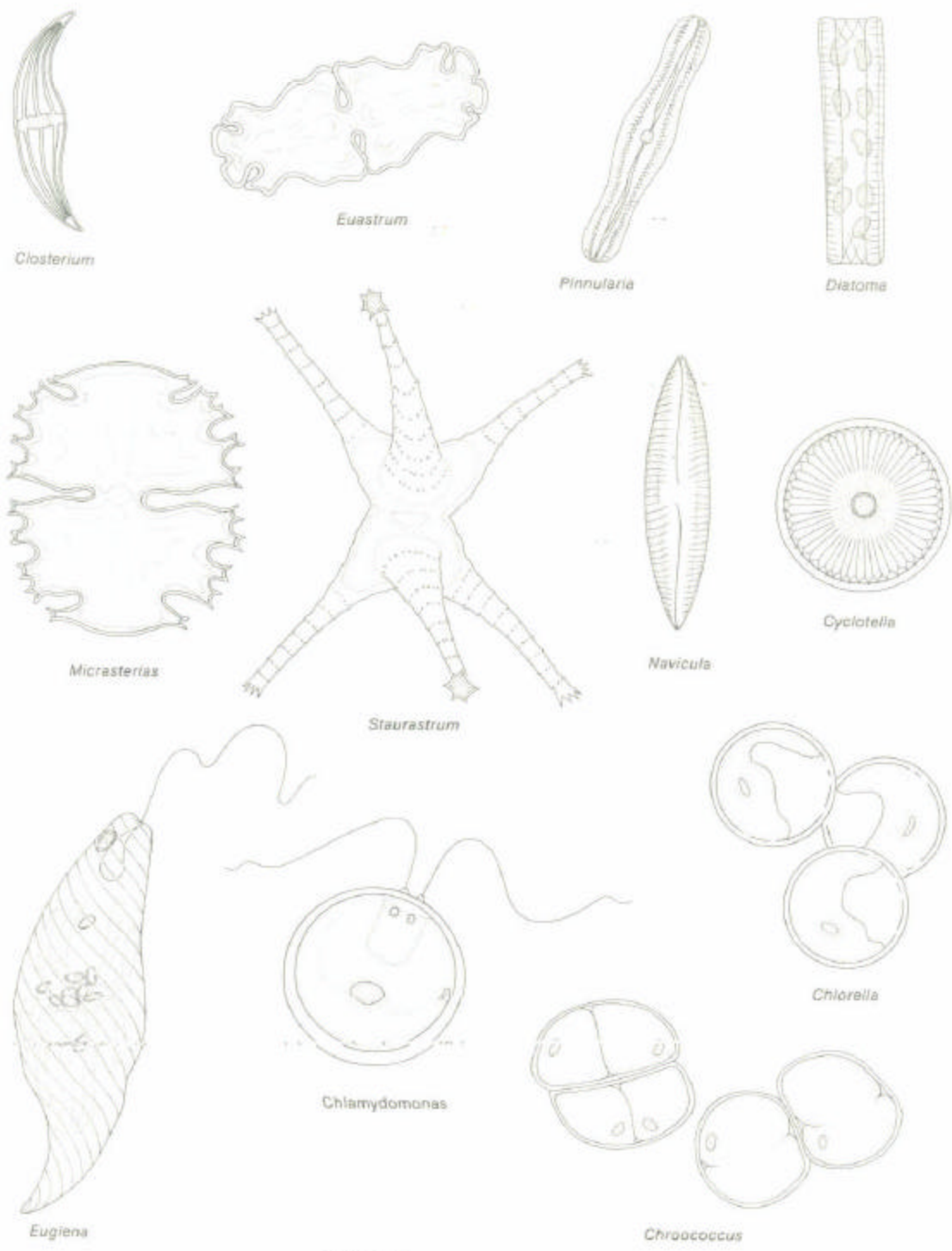


FIGURE 1-8
Unicellular algae commonly found in pond water.



Oscillatoria



Spirogyra



Zygnema



Pediastrum



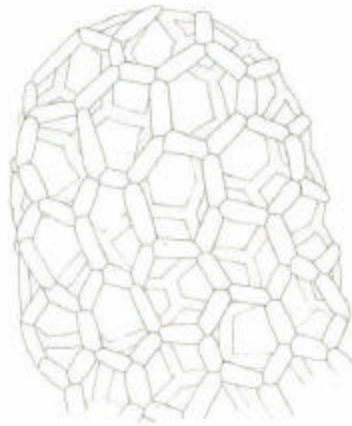
Pandorina



Scenedesmus



Cladophora



Hydrodictyon



Anabaena

Appendix B:
Invertebrates also found in Pond Water

